

ROADMAP TO SUCCESS

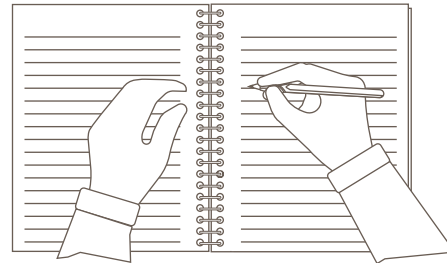
01

PURSUE YOUR PASSION



02

PASS COMPETENCY-BASED INTERVIEW. SUCCESSFUL REFERENCE CHECKS



03

ATTEND MHR ORIENTATION



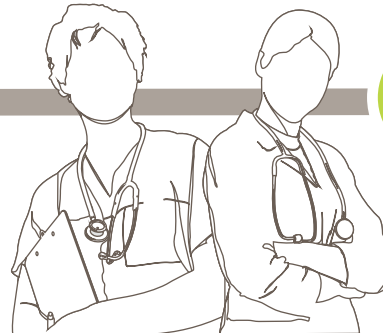
05

RECEIVE A POSITIVE PERSONNEL ASSESSMENT



04

COMPLETE CLINICAL ORIENTATION AND PROCEDURES



06

FIRST SHIFT PLACEMENT



07

CONTINUOUS PROFESSIONAL DEVELOPMENT EXAMPLES INCLUDE:

- BLS/Heartsaver CPR
- Infection Prevention and Control
- Basic and Advanced ECG
- IV Workshop
- Wound Care
- Critical Care
- Triage

